

CIRCULAR HOPPER (WATER) 2220



EXCLUSIVE SYSTEM IN THE WORLD

M

Machinery manufactured in stainless steel following the best quality standards, providing the best finish and resistance.

M

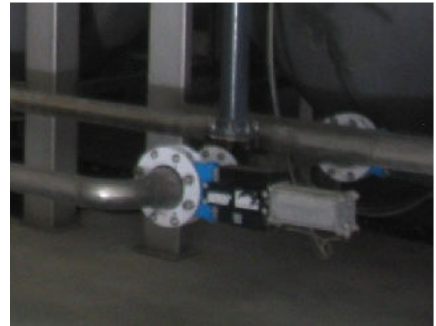
More than 80 types of machines for processing all types of vegetables such as potatoes, carrots and fruit, unique design. Do not settle for mere copies.

A

Aadjustable in length, width and height with numerous sizes and designs to always provide the right solution to your needs.

Q

Quality, design and efficiency in all our machines to extend their working life and make your work as easy as possible.



The **Martin Maq Circular Hopper (Water)** receives the product and it accumulates it in water, allowing it to soak prior to washing. This process also acts as a pre-wash.

Capacity of 6 m³, it can accumulate up to 5 tons of product (potatoes, carrots, ...)

Placed in the middle of a line, it can act as an accumulation point that will not damage the product.

This hopper is unique in the market, as it functions with only one water pump, with no conveyors, no bearings or submerged rollers. Maintenance is minimum and repairs rare.

It can be placed with machines such as the waste elimination models.



IMPORTANT PARTS OF THE MACHINE



A: Made in stainless steel.

B: Exit.

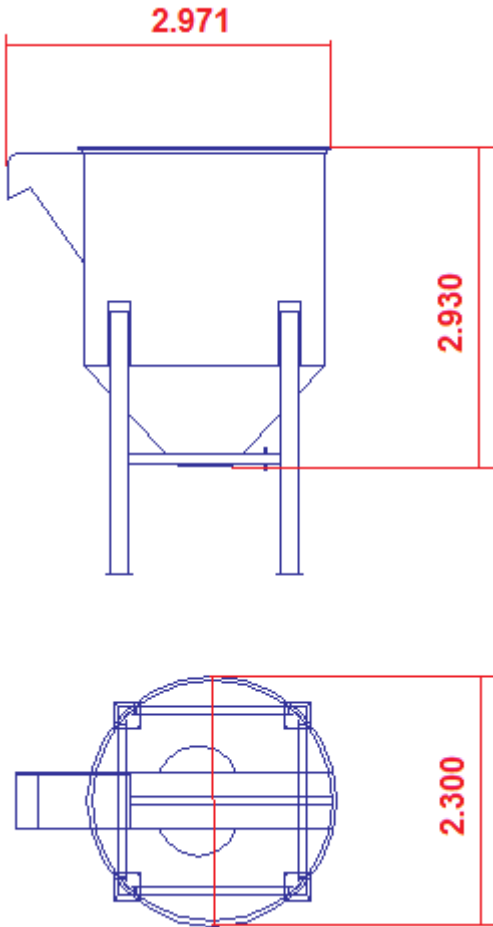
C: Hopper is made to measure (NO adjustable legs).

D: Water entry (coming from a submerged water pump included with the hopper but that requires placing within another of the machines, washer, deposit or tank ...)

E: Pneumatic water entry valve to avoid the product exiting the hopper.

OPTION: Product detectors can be placed on this machine, elevation platforms, settling tanks, etc.

TECHNICAL SPECIFICATIONS

CIRCULAR HOPPER (WET) TRC 22 20	L: 2.971 mm W: 2.300 mm H: 2.930 mm
 <p>The technical drawing consists of two views of a circular hopper. The top view shows a circular hopper with a diameter of 2.300 mm, indicated by a red dimension line on the right. The front view shows the hopper's height of 2.930 mm, indicated by a red dimension line on the right, and a width of 2.971 mm, indicated by a red dimension line at the top. The hopper has a cylindrical body with a conical bottom and two vertical legs. A small rectangular protrusion is visible on the left side of the front view.</p>	

- Capacity of 6 m³ approx.
- It can receive and accumulate 5 T (carrots, potatoes, etc.)
- Power water pump: 5 KW.
- CE Marking
- Adjustable legs can be placed.
- Unique structure without belts, pulleys, bearings or exit conveyor.
- Low maintenance.

At **MARTIN MAQ** we know that you take great care of your product.

We know that this requires much effort and dedication. This is why we always place all our efforts in designing and manufacturing machines that will help you process your product efficiently, giving it the best possible finish.

We build all our machines to the highest of quality standards, making maintenance very easy and extending the machine's working life.

We have, at your disposal, an after-sales technical team that will assist you with any doubts that you may have during use and will inform you about how to care for your machine and keep maintenance as low as possible.

AFTER-SALES SERVICE

**ALWAYS REQUEST
ORIGINAL
MARTIN MAQ
SPARE PARTS**



I+D+I



FABRICACIÓN

**SERVICIO
POST VENTA**



REPUESTOS



MARTIN MAQ
Autovía A-601, Exit 91
40291 TABANERA LA LUENGA
Segovia (SPAIN)

T: +34-921-122 122
F: +34-921-57 70 88
e-mail: martinmaq@martinmaq.com
www.martinmaq.com

MARTIN MAQ Distributor:

