



Our range of strawberry plant washing machines LF series are the right machines to carry out a careful cleaning of the strawberry seedlings.

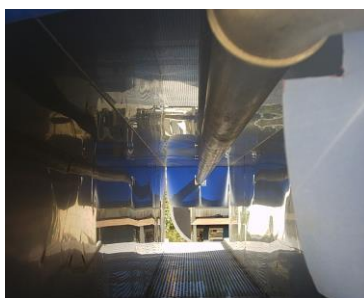
The machine is designed with a soft vibratory movement, the boxes with the seedlings go advancing through the washing tunnel, using the vibration movement to release the soil adhered to the roots.

This machine is also valid for the cleaning of any type of box or product that needs to be cleaned with care.

Optionally this machine can be complemented with a system of water recovery by simple decantation in order to avoid that the soil ends in the water pipes of the place here are installed in, avoiding mud jams and considerably reducing the consumption of water necessary for the correct functioning of the system.

To complement this system, we offer a wide range of conveyors, vibrating multifunction hoppers, hoppers, graders, washers, water recycling systems, etc.





General features

- Robust construction in stainless steel.
- Suitable for strawberry plants and any other product.
- High flow showers.
- Advance of the boxes by means of double motovibrador.
- Anti-vibration system to prevent the transmission of vibrations to the machine and floor of the ship.
- Easy cleaning.
- Very reduced maintenance.
- Low power consumption.
- CE Marked.
- Options:
 - Water recovery system with two decantation tanks.
 - Water pump.

Tecnical features

	Maximun capacity(*)	Size L, W, H (**)	KW
LF440	300 box/hour	1600x4100x1800 mm	0,75 KW

(*) – Depending on the product.

(**) – Other measures under request.